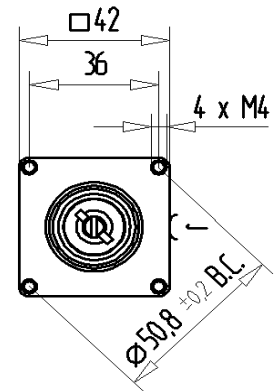


## CVUN-250AC/15-BUJA-Z

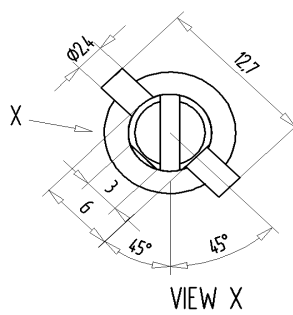
### Specifications

|   |               |
|---|---------------|
| Capacity $C_{max}$ (nominal)                          | 250 pF        |
| Capacity $C_{min}$ (nominal)                          | 25 pF         |
| Voltage (Peak Test $U_{pt}$ / Peak Working $U_{pw}$ ) | 15 kV / 9 kV  |
| Capacity Tolerance (linear Range)                     | 10%           |
| Max. Current $I_{max}$ at 13.56 MHz with              | 94 Arms       |
| Conduction Cooling                                    | 20 W          |
| Self Inductance                                       | $\leq 8$ nH   |
| Capacitance per turn                                  | 20.8 pF/turn  |
| Torque  | $\leq 0.2$ Nm |
| Net Weight  | 0.5 kg        |

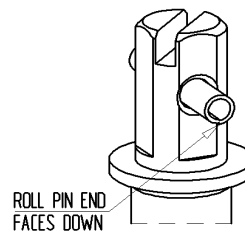
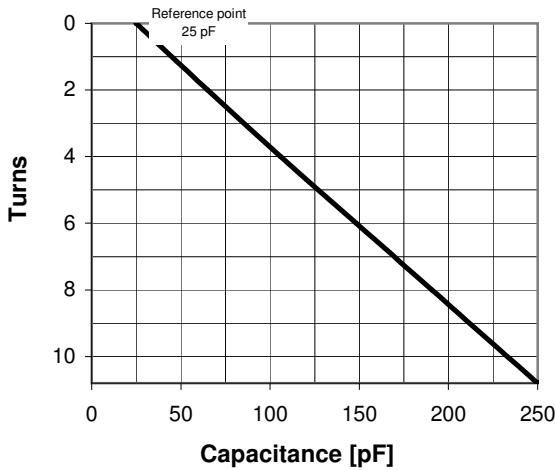
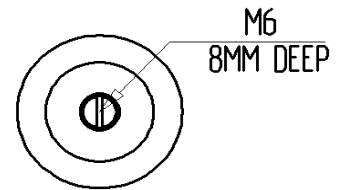
VIEW T



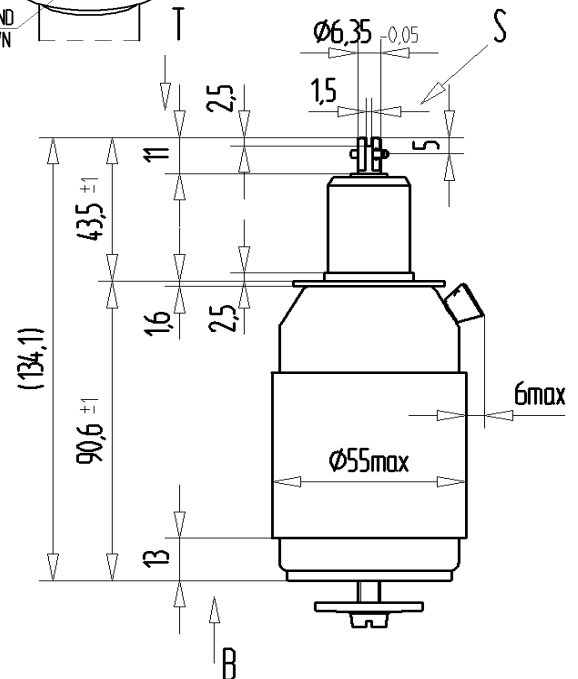
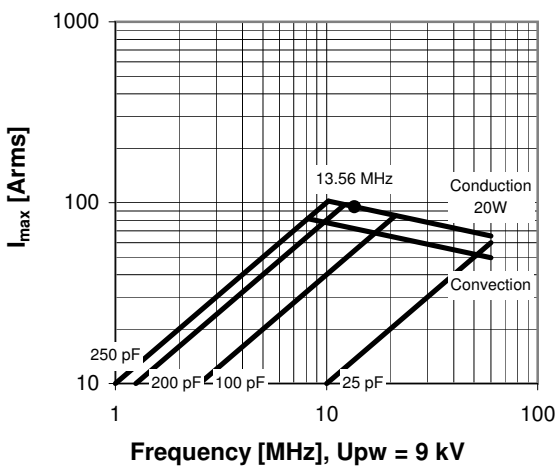
VIEW S



VIEW B



$I_{max}$  at 25°C ambient and 125°C surface temp. for convection and conduction (20 W) cooling

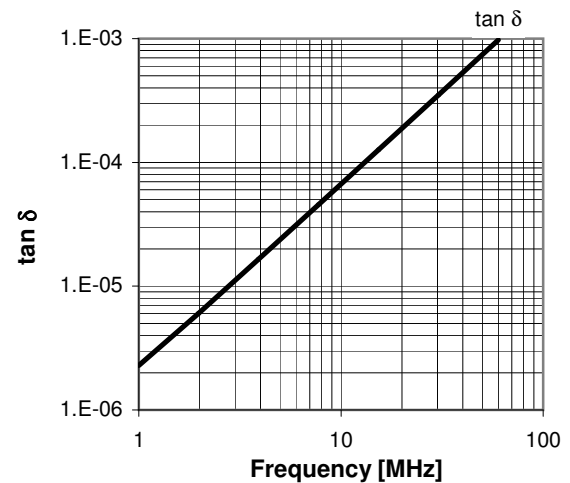
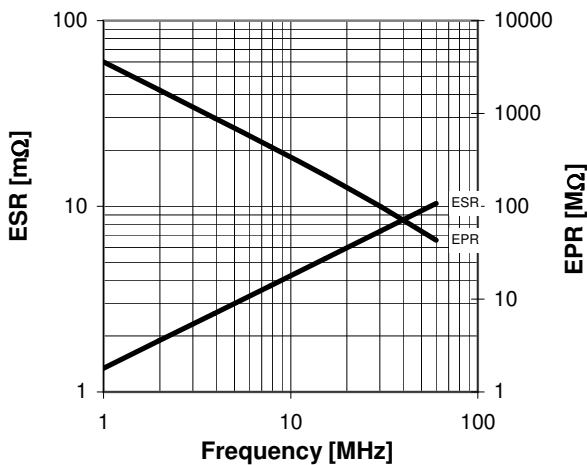
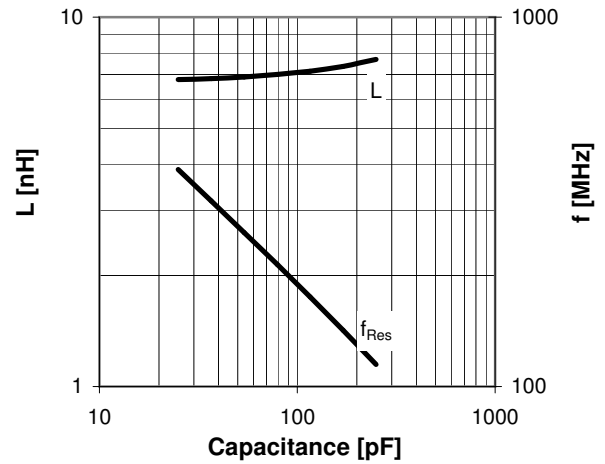


## CVUN-250AC/15-BUJA-Z

| Turns | Nominal Capacitance [pF] | Tolerance |
|-------|--------------------------|-----------|
| 0.0   | 25.0                     | 0%        |
| 2.0   | 64.9                     | 10%       |
| 4.0   | 105.8                    | 10%       |
| 6.0   | 148.2                    | 10%       |
| 8.0   | 190.7                    | 10%       |
| 10.8  | 250.0                    | 10%       |

Mechanical stop at < 25 pF at ~ -0.8 turns  
Mechanical stop at > 250 pF at ~ 11 turns

Self inductance and resonance frequency



**Special Features:**

Special Series Features