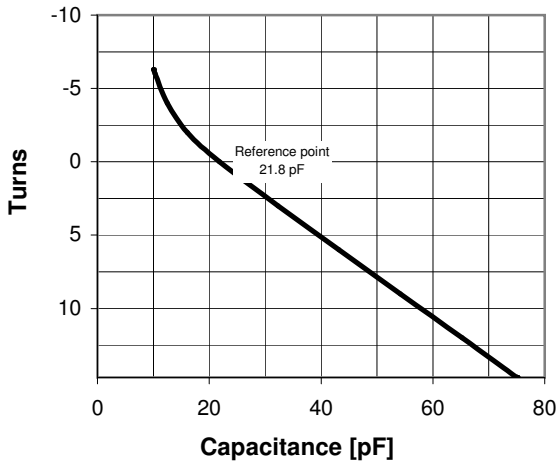
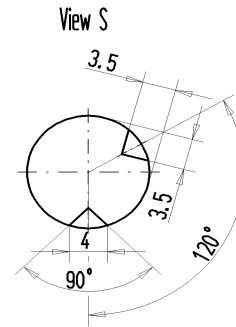


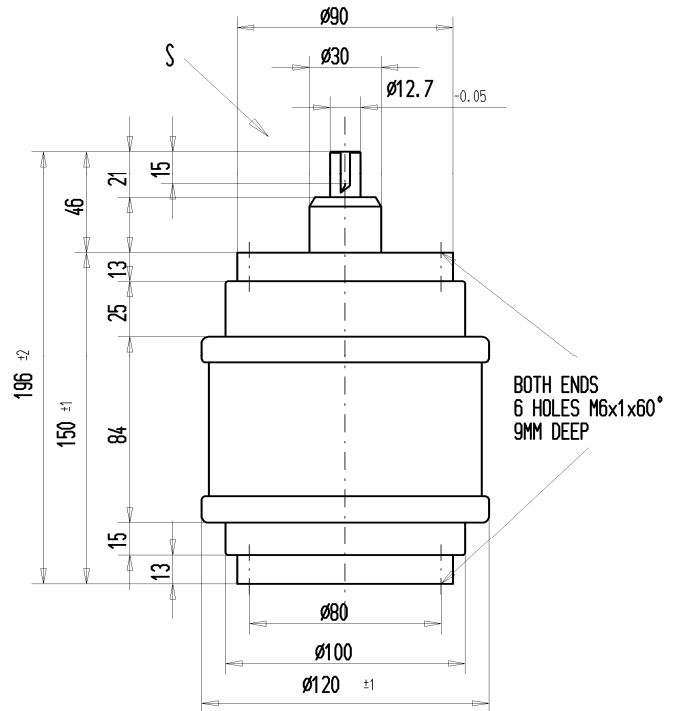
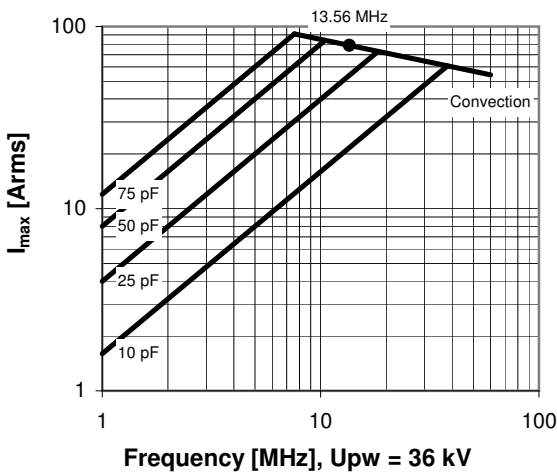
CVNA-75AC/60-ABA

Old Type Designation: CV3C-75EB

Specifications	
Capacity C_{max} (nominal)	75 pF
Capacity C_{min} (nominal)	10 pF
Voltage (Peak Test U_{pt} / Peak Working U_{pw})	60 kV / 36 kV
Capacity Tolerance (linear Range)	10%
Max. Current I_{max} at 13.56 MHz	78 Arms
Self Inductance	≤ 17 nH
Capacitance per turn	3.6 pF/turn
Torque	≤ 0.3 Nm
Net Weight	2.8 kg



I_{max} at 25°C ambient and 125°C surface temp. for convection cooling



Subject to change without prior notice

Note: Technical information in Service Bulletin SB-52 must be considered

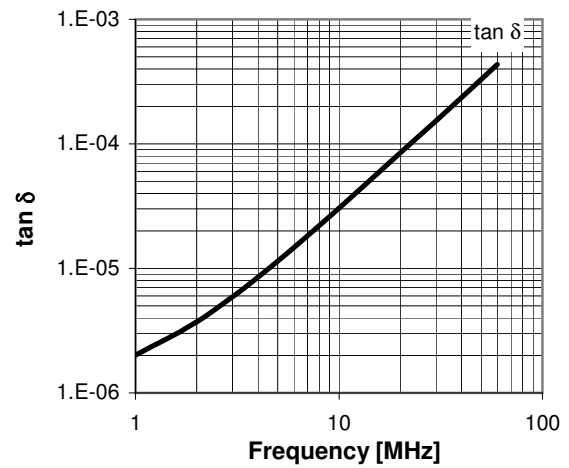
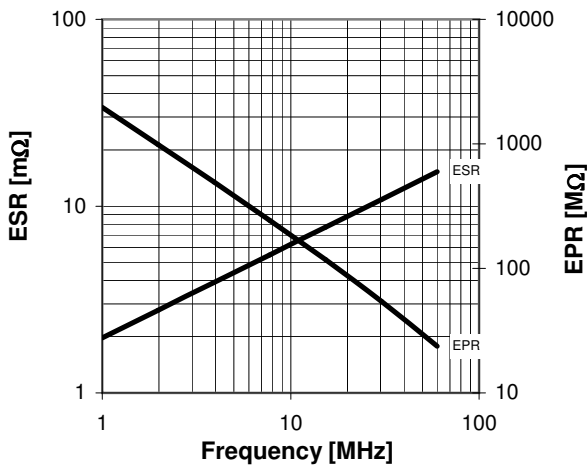
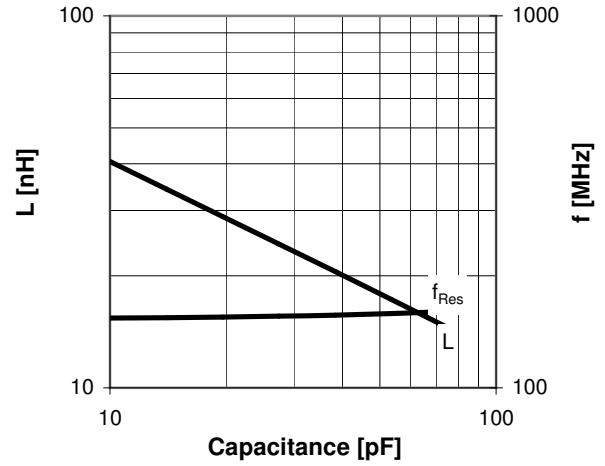
CVNA-75AC/60-ABA

Old Type Designation: CV3C-75EB

Turns	Nominal Capacitance [pF]	Tolerance
-6.3	10.0	10%
-6.0	10.3	10%
-4.0	12.5	10%
-2.0	16.1	10%
0.0	21.8	0%
3.0	32.3	10%
6.0	43.2	10%
9.0	54.2	10%
12.0	65.2	10%
14.7	75.0	10%

Mechanical stop at < 10 pF at ~ -11.5 turns
Mechanical stop at > 75 pF at ~ 15.1 turns

Self inductance and resonance frequency



Subject to change without prior notice

Note: Technical information in Service Bulletin
SB-52 must be considered