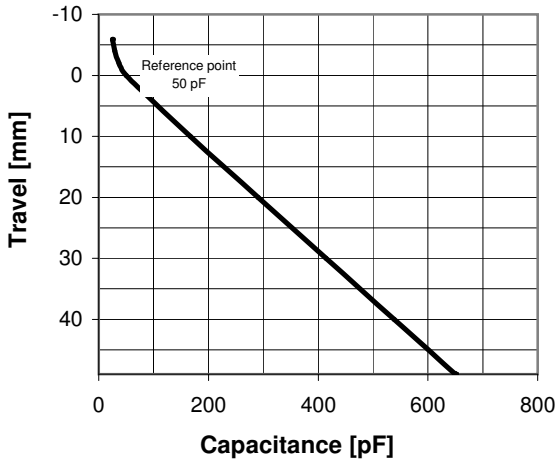
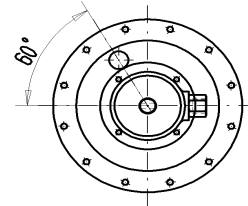


CVMA-650EW/50-AGP-F

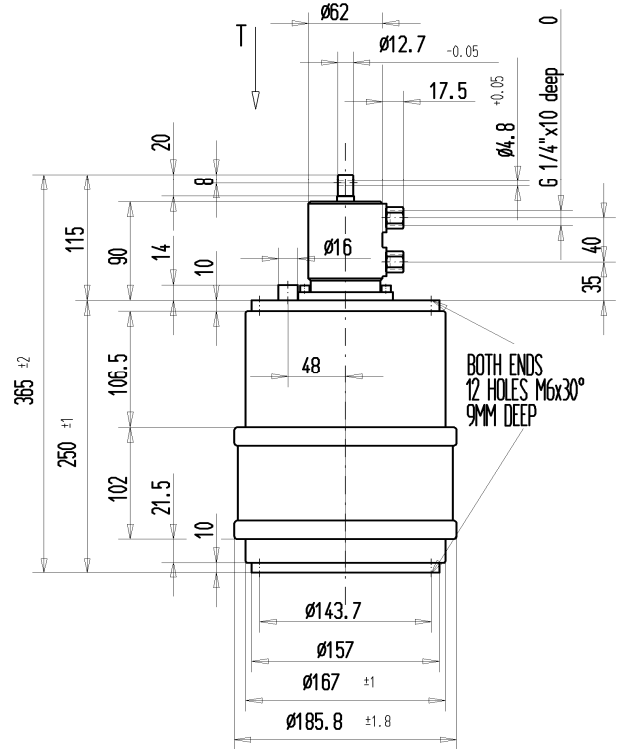
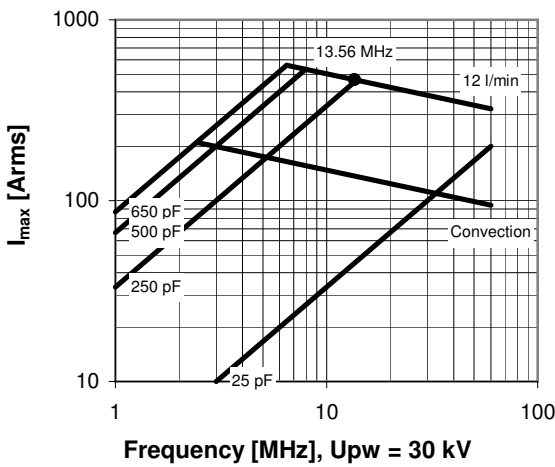
Old Type Designation: CV3W-650E

Specifications	
Capacity C_{max} (nominal)	650 pF
Capacity C_{min} (nominal)	25 pF
Voltage (Peak Test U_{pt} / Peak Working U_{pw})	50 kV / 30 kV
Capacity Tolerance (linear Range)	3%
Max. Current I_{max} at 13.56 MHz with	467 Arms
Water Cooling	12 l/min
Self Inductance	≤ 31 nH
Capacitance per mm	12.2 pF/mm
Pull Force	≤ 700 N
Net Weight	13 kg

View T



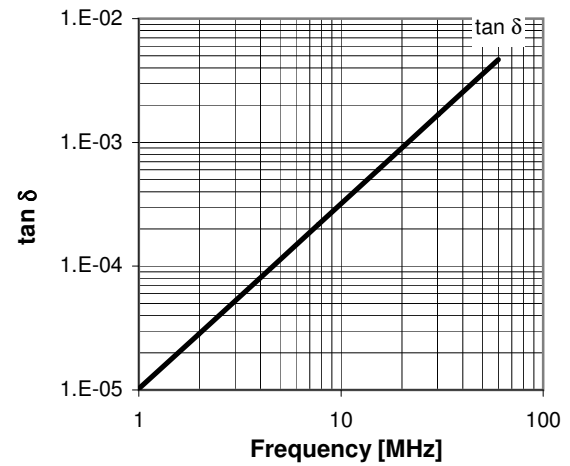
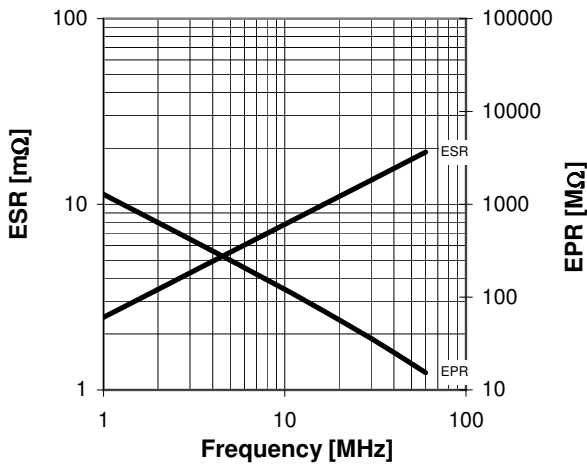
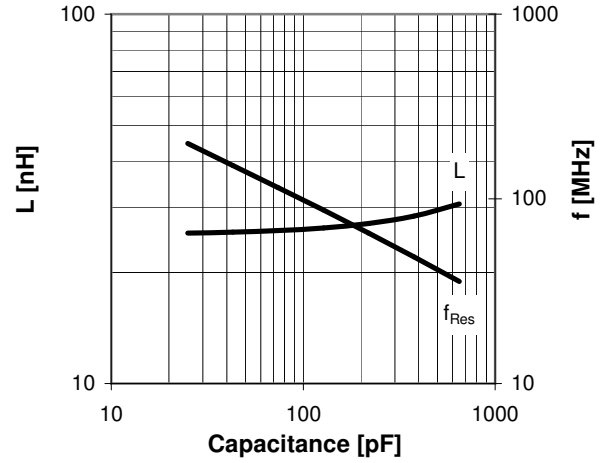
I_{max} for 12 l/min water cooling; max. water temp. at inlet: 70°C;
fixed end has to be water cooled with min. 4 l/min



Travel [mm]	Nominal Capacitance [pF]	Tolerance
-5.9	25.0	3%
-4.0	29.3	3%
-2.0	37.0	3%
0.0	50.0	0%
10.0	167.0	3%
20.0	290.8	3%
30.0	414.5	3%
40.0	538.3	3%
49.0	650.0	3%

Mechanical stop at < 25 pF at ~ -8.9 mm
Mechanical stop at > 650 pF at ~ 49.4 mm

Self inductance and resonance frequency



Special Features:

Capacity Tolerance 3%