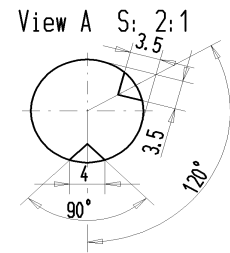
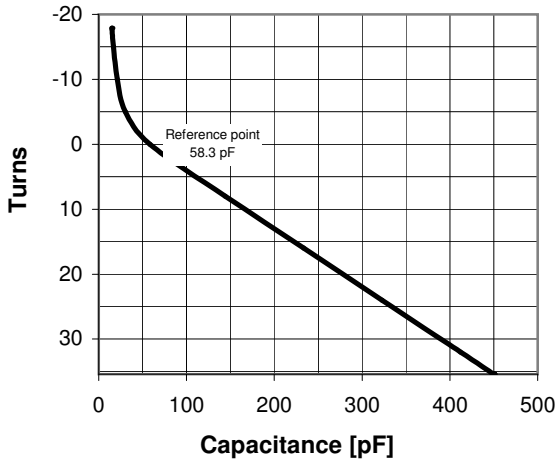
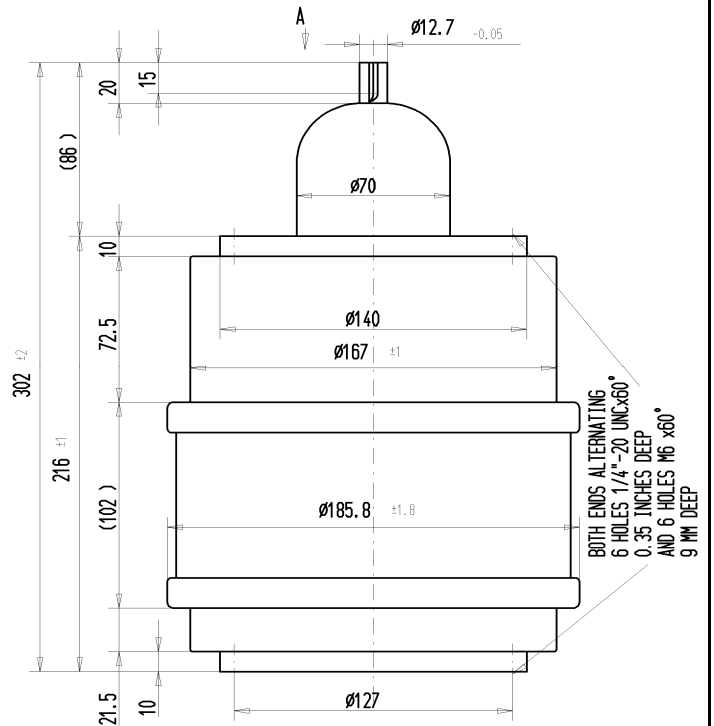
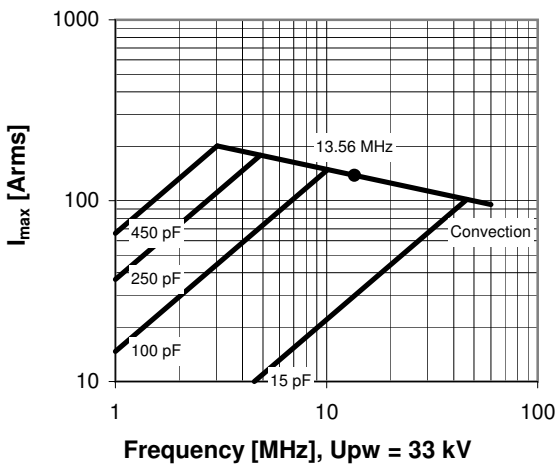


CVMA-450AC/55-ABB-H

Specifications	
Capacity C_{max} (nominal)	450 pF
Capacity C_{min} (nominal)	15 pF
Voltage (Peak Test U_{pt} / Peak Working U_{pw})	55 kV / 33 kV
Capacity Tolerance (linear Range)	2%
Max. Current I_{max} at 13.56 MHz	137 Arms
Capacitance per turn	11.1 pF/turn
Torque	≤ 1.5 Nm
Net Weight	8.7 kg



I_{max} at 25°C ambient and 125°C surface temp. for convection cooling

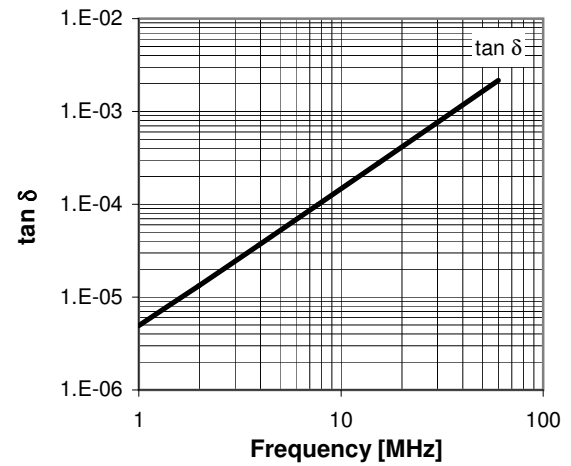
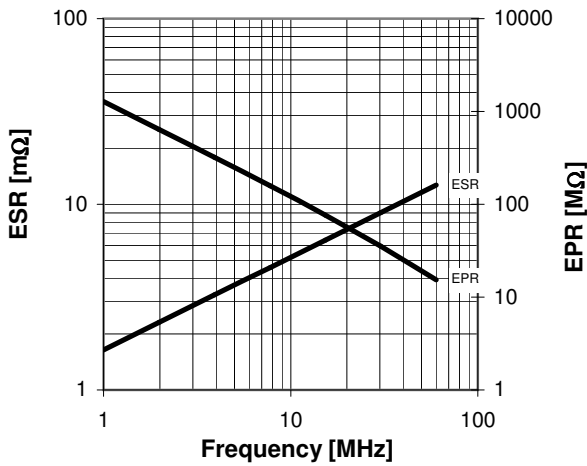
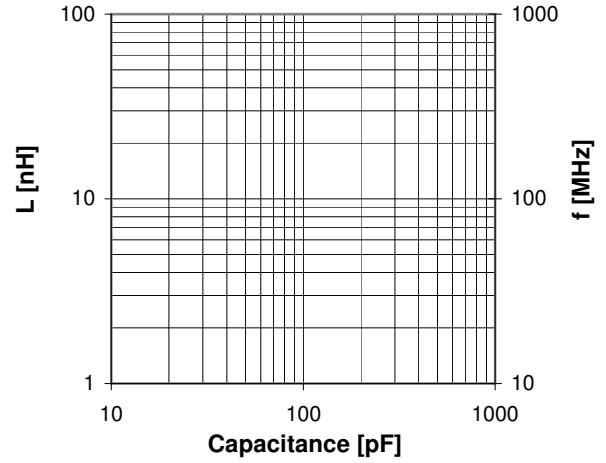


CVMA-450AC/55-ABB-H

Turns	Nominal Capacitance [pF]	Tolerance
-17.9	15.0	2%
-15.0	16.7	2%
-10.0	21.0	2%
-5.0	30.4	2%
0.0	58.3	0%
8.0	143.9	2%
16.0	233.3	2%
24.0	322.8	2%
32.0	412.2	2%
35.4	450.0	2%

Mechanical stop at < 15 pF at ~ -24.2 turns
Mechanical stop at > 450 pF at ~ 35.8 turns

Self inductance and resonance frequency



Special Features:

Special C-Curve / Special Capacity Tolerance