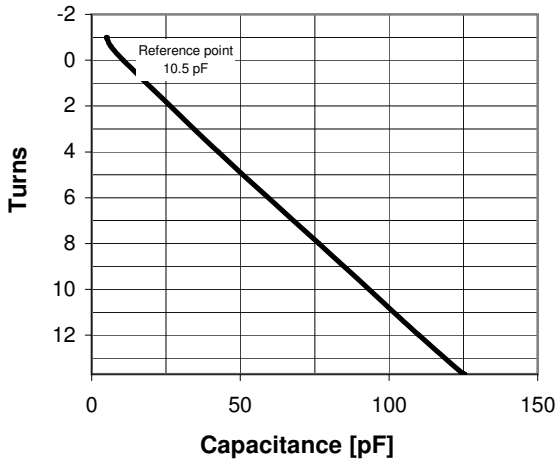
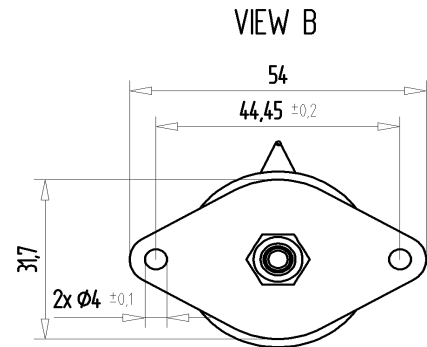
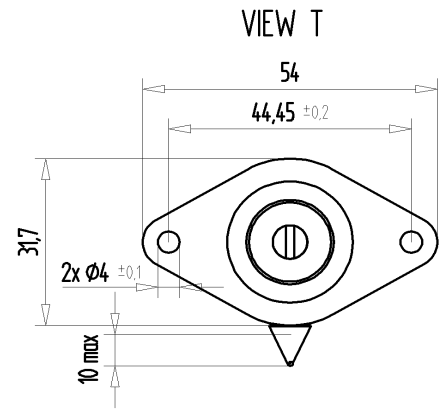


CVLI-125AC/8-BFS

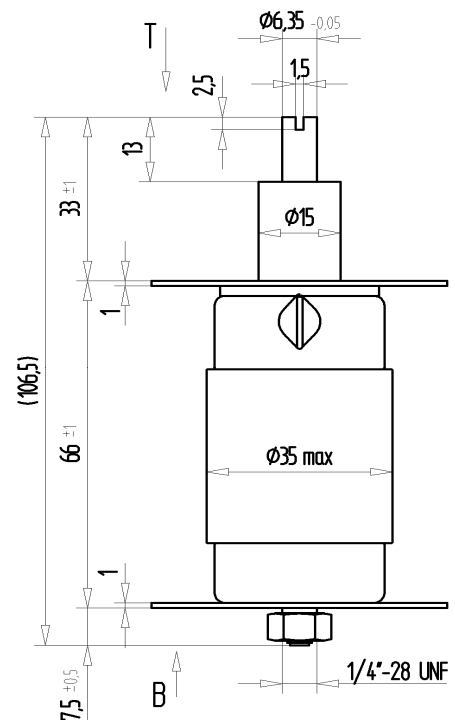
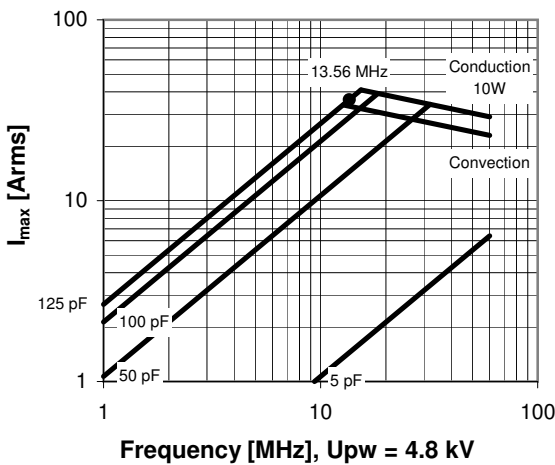
Old Type Designation: CV05C-125E/8

Specifications

| | |
|---|----------------|
| Capacity C_{max} (nominal) | 125 pF |
| Capacity C_{min} (nominal) | 5 pF |
| Voltage (Peak Test U_{pt} / Peak Working U_{pw}) | 8 kV / 4.8 kV |
| Capacity Tolerance (linear Range) | 10% |
| Max. Current I_{max} at 13.56 MHz with | 36 Arms |
| Conduction Cooling | 10 W |
| Self Inductance | ≤ 8 nH |
| Capacitance per turn | 8.4 pF/turn |
| Torque | ≤ 0.15 Nm |
| Net Weight | 0.2 kg |



I_{max} at 25°C ambient and 125°C surface temp. for convection and conduction (10 W) cooling



CVLI-125AC/8-BFS

Old Type Designation: CV05C-125E/8

| Turns | Nominal Capacitance [pF] | Tolerance |
|-------|--------------------------|-----------|
| -1.0 | 5.0 | 10% |
| -0.6 | 6.5 | 10% |
| 0.0 | 10.5 | 0% |
| 4.0 | 42.6 | 10% |
| 8.0 | 76.4 | 10% |
| 12.0 | 110.1 | 10% |
| 13.7 | 125.0 | 10% |

Mechanical stop at < 5 pF at ~ -5.4 turns
Mechanical stop at > 125 pF at ~ 14.1 turns

Self inductance and resonance frequency

