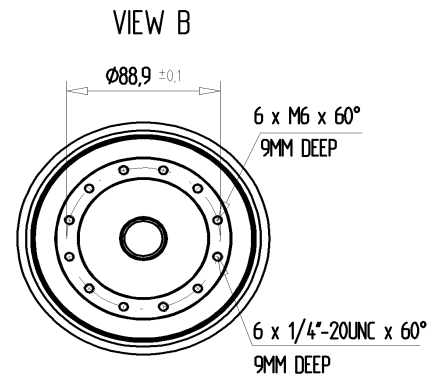
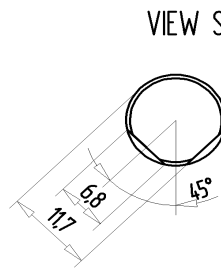
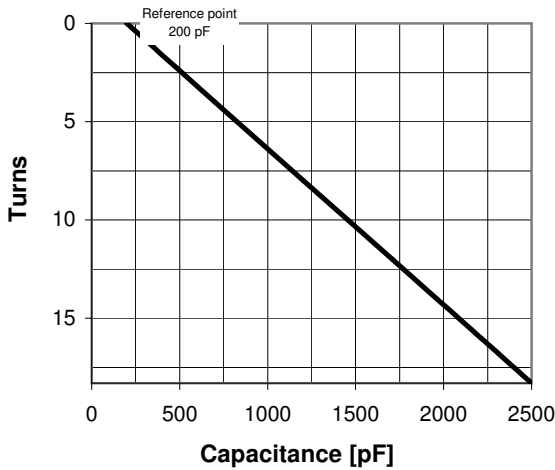
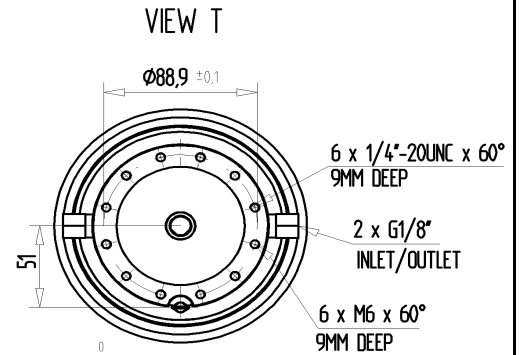
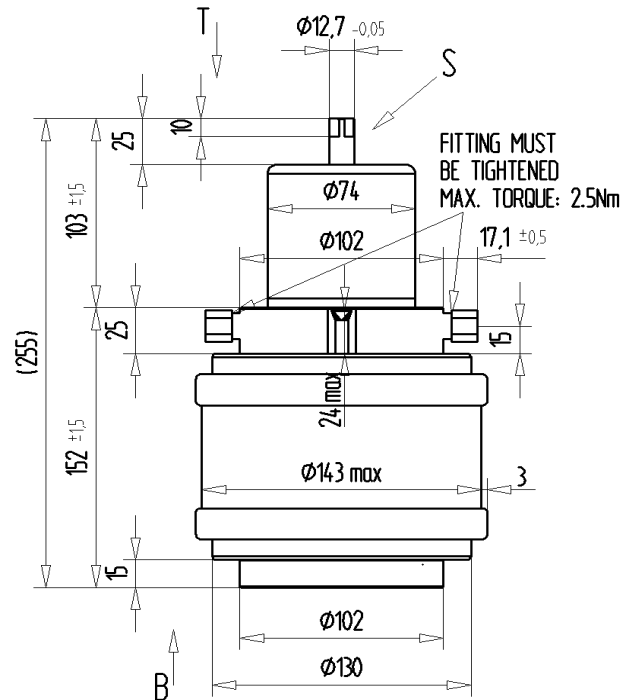
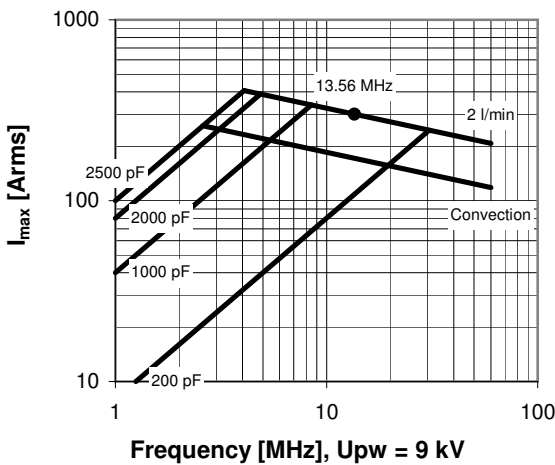


CVHI-2500AW/15-ADUD

Specifications	
Capacity C_{max} (nominal)	2500 pF
Capacity C_{min} (nominal)	200 pF
Voltage (Peak Test U_{pt} / Peak Working U_{pw})	15 kV / 9 kV
Capacity Tolerance (linear Range)	10%
Max. Current I_{max} at 13.56 MHz with	300 Arms
Water Cooling	2 l/min
Self Inductance	≤ 15 nH
Capacitance per turn	125.7 pF/turn
Torque	≤ 0.8 Nm
Net Weight	6.5 kg



I_{max} for 2 l/min water cooling; max. water temp. at inlet: 70°C;
fixed end has to be cooled with min. 50 W



CVHI-2500AW/15-ADUD

Turns	Nominal Capacitance [pF]	Tolerance
0.0	200.0	0%
4.0	700.6	10%
8.0	1203.3	10%
12.0	1708.0	10%
16.0	2211.8	10%
18.3	2500.0	10%

Mechanical stop at < 200 pF at ~ -2.8 turns
Mechanical stop at > 2500 pF at ~ 18.5 turns

Self inductance and resonance frequency

