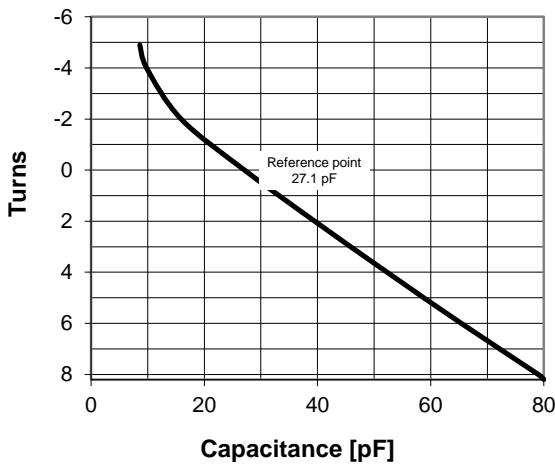
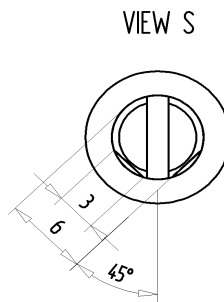
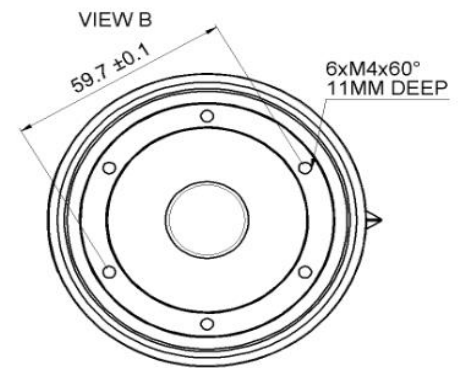
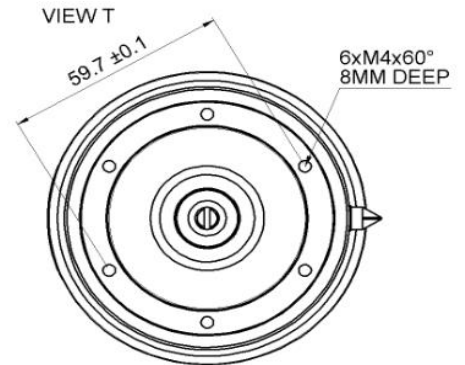


## CVHE-80AC/25-BEAA

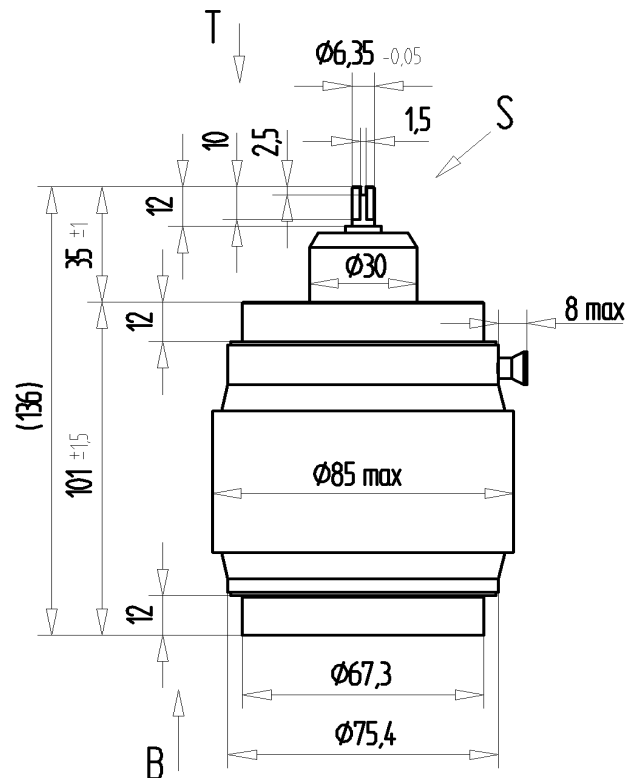
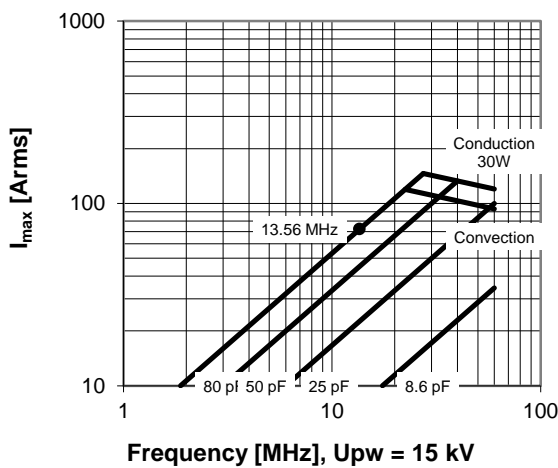
Old Type Designation: CV1C-80HD

### Specifications

Capacity $C_{max}$ (nominal)	80 pF
Capacity $C_{min}$ (nominal)	8.6 pF
Voltage (Peak Test $U_{pt}$ / Peak Working $U_{pw}$ )	25 kV / 15 kV
Capacity Tolerance (linear Range)	10%
Max. Current $I_{max}$ at 13.56 MHz with	72 Arms
Conduction Cooling	30 W
Self Inductance	$\leq 5$ nH
Capacitance per turn	6.5 pF/turn
Torque	$\leq 0.4$ Nm
Net Weight	1.4 kg



$I_{max}$  at 25°C ambient and 125°C surface temp. for convection and conduction (30 W) cooling



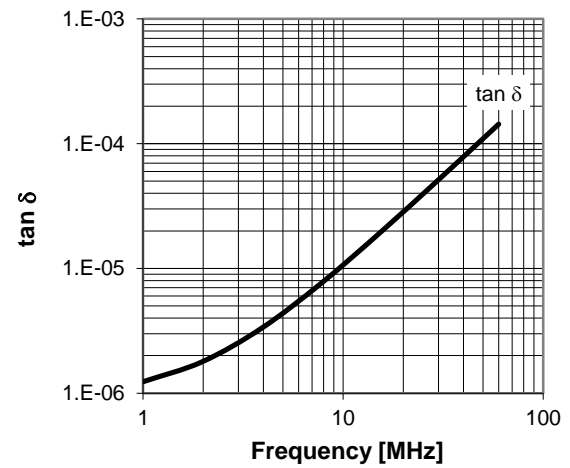
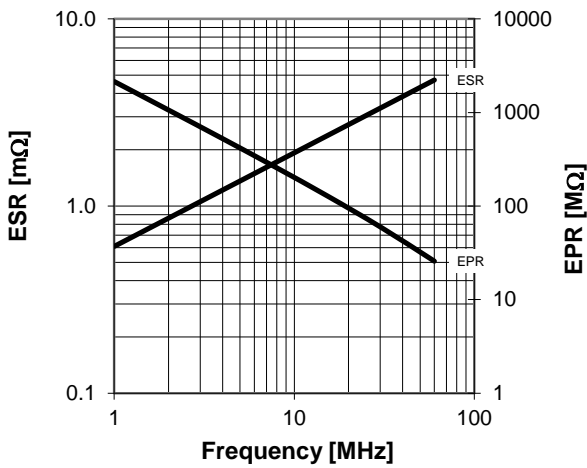
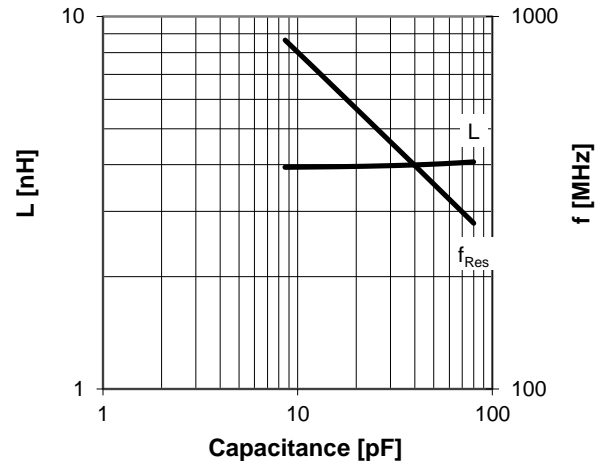
## CVHE-80AC/25-BEAA

Old Type Designation: CV1C-80HD

Turns	Nominal Capacitance [pF]	Tolerance
-4.9	8.6	10%
-4.0	9.8	10%
-2.0	15.9	10%
0.0	27.1	0%
2.0	39.5	10%
4.0	52.3	10%
6.0	65.4	10%
8.0	79.0	10%
8.2	80.0	10%

Mechanical stop at < 8.6 pF at ~ -8.2 turns  
Mechanical stop at > 80 pF at ~ 8.7 turns

Self inductance and resonance frequency



Type Ordering Information:	Upt
CVHE-80AC/25-BEAA	25 kV
CVHE-80AC/20-BEAA	20 kV
CVHE-80AC/15-BEAA	15 kV
CVHE-80AC/10-BEAA	10 kV