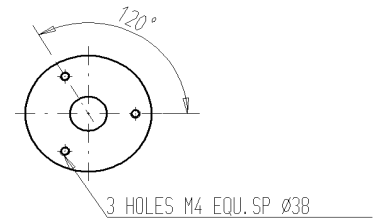
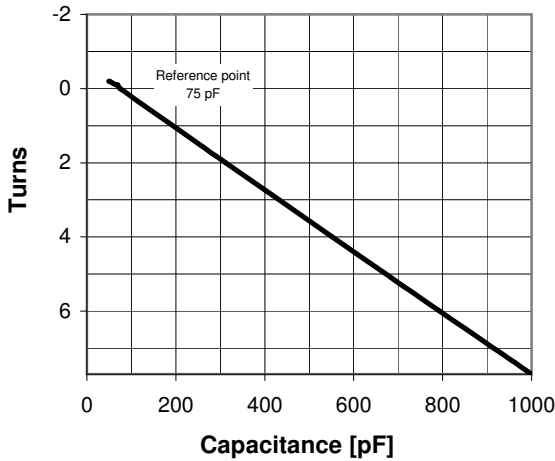


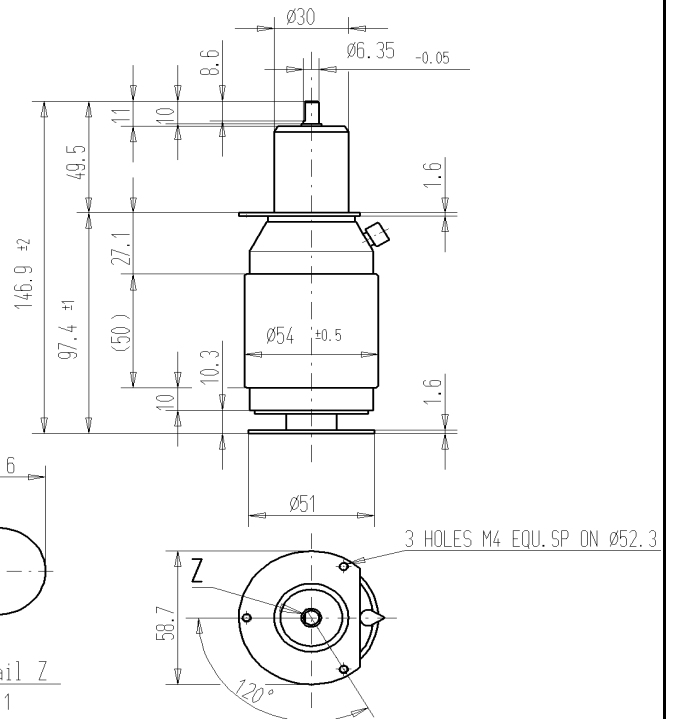
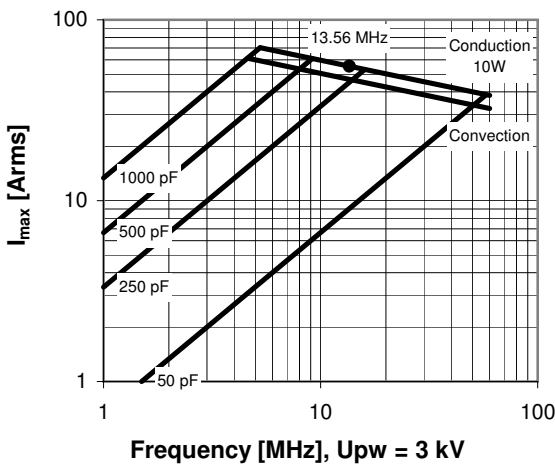
CVBA-1000AC/5-BCF-L

Old Type Designation: CV05C-1000SA

Specifications	
Capacity C_{max} (nominal)	1000 pF
Capacity C_{min} (nominal)	50 pF
Voltage (Peak Test U_{pt} / Peak Working U_{pw})	5 kV / 3 kV
Capacity Tolerance (linear Range)	10%
Max. Current I_{max} at 13.56 MHz with	55 Arms
Conduction Cooling	10 W
Self Inductance	≤ 11 nH
Capacitance per turn	120.1 pF/turn
Torque	≤ 0.15 Nm
Net Weight	0.65 kg



I_{max} at 25°C ambient and 125°C surface temp. for convection and conduction (10 W) cooling



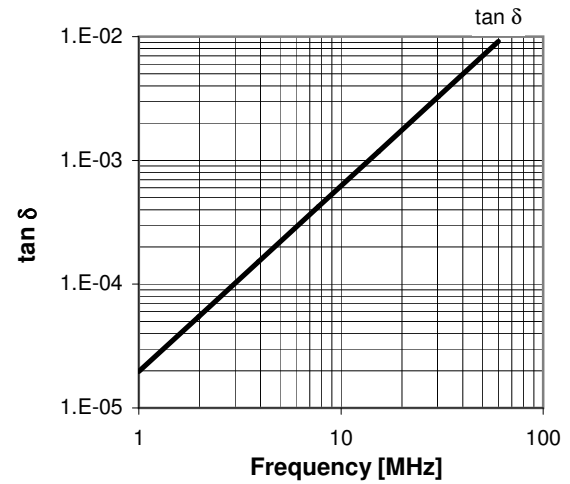
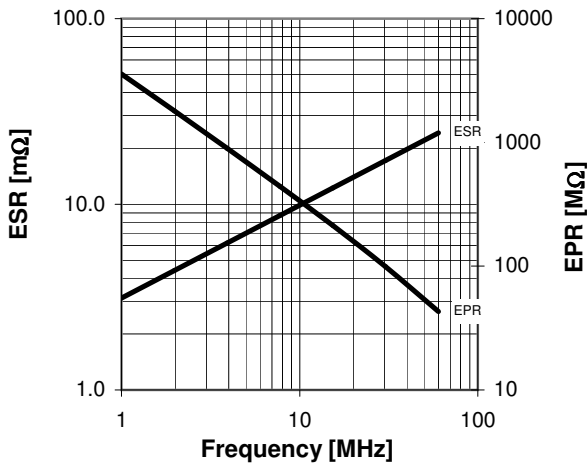
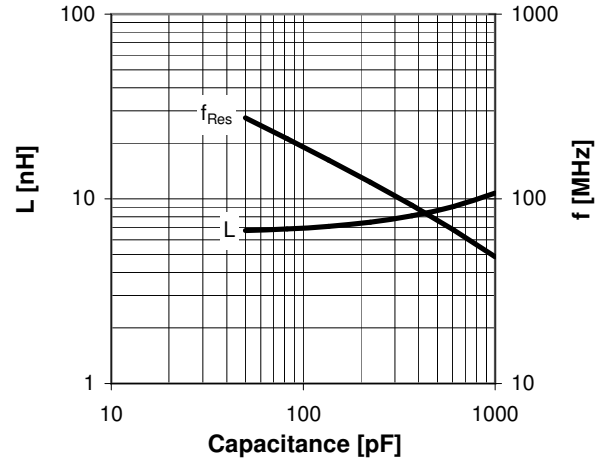
Subject to change without prior notice

Note: Technical information in Service Bulletin
SB-52 must be considered

Turns	Nominal Capacitance [pF]	Tolerance
-0.2	50.0	10%
-0.1	65.4	10%
-0.1	69.3	10%
0.0	75.0	0%
2.0	312.2	10%
4.0	551.2	10%
6.0	793.4	10%
7.7	1000.0	10%

Mechanical stop at < 50 pF at ~ -0.4 turns
Mechanical stop at > 1000 pF at ~ 7.9 turns

Self inductance and resonance frequency



Special Features:

Integrated Flange

Subject to change without prior notice

Note: Technical information in Service Bulletin
SB-52 must be considered